

ALPHAPACK®

COMPACT PICK & PLACE PACKER



Combi's alphapack® is an ultra-compact system for top loading products into corrugated cases. This system features an integrated case erector, yielding the smallest footprint in the industry while accommodating a wide range of case sizes and pack patterns. The alphapack fits into the tightest packaging lines for precise top-loading of cartons, cans, bottles, bags and other products in single or multiple layers. Gentle product handling with vacuum or mechanical product pickup assure consistent case loading and product integrity. The alphapack system features heavy-duty welded tubular steel construction, integrated touchscreen controls and diagnostics with a linear servo system capable of 25 picks per minute. This well built machine will provide years of reliable service.

ALPHAPACK® FEATURES:

- Ultra compact footprint with integrated case erector
- Motorized high volume vacuum case pick
- Vacuum blowoff every cycle to clear corrugated dust buildup
- Heavy-duty welded steel construction with lifetime guarantee
- Quick release change parts for fast product changeovers
- Two axis servo pick & place unit for gentle product handling
- Packs single or multiples layers into unsealed case
- Guarding with hinged doors and safety interlocks
- EZ load, walk-in 50" powered case magazine
- Right hand or left hand execution

ALPHAPACK®

ELECTRICAL SERVICE:

240 volt /3ph /60Hz /25 amps

AIR REQUIREMENTS:

80 PSI clean air supply.
Consumes approximately 30 cfm

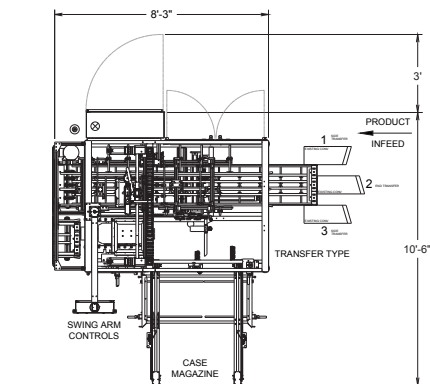
LAYER WEIGHT LIMITS	
up to 15 lbs	25 ppm
16 - 25 lbs	20 ppm
26 - 35 lbs	15 ppm
36 lbs	10 ppm

MODEL	CASE SIZE MIN (LXWXH)	CASE SIZE MAX (LXWXH)	SPEED: CPM*
Alphapack 250	8½ x 4¾ x 4" (216x121x102mm)	20 x 13½ x 19½" (508x343x495mm)	12 cpm or 25 picks/min
Alphapack 300	13 x 7¾ x 6" (330x197x152mm)	24 x 16 x 18" (610x406x458mm)	10 cpm or 25 picks/min

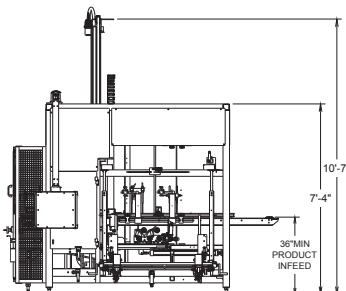
* Speeds are dependent on case, product and pack pattern
Maximum rotational speed 20 ppm



Various methods for efficiently and safely top loading products. Solutions available for flexible pouches, gable top cartons, gusseted bags, bottles, cans, among others.



LEFT HAND



DISTRIBUTED BY:

COMBI
PACKAGING SYSTEMS LLC

6299 Dressler Rd NW North Canton, OH 44720
Phone: 1-800-521-9072 www.combi.com

© 2018 Combi Packaging Systems LLC, a joint venture with 3M™ and Maillis Group